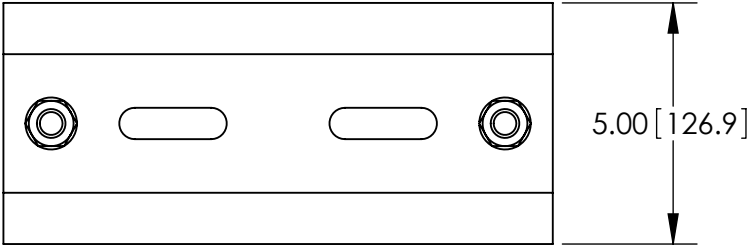
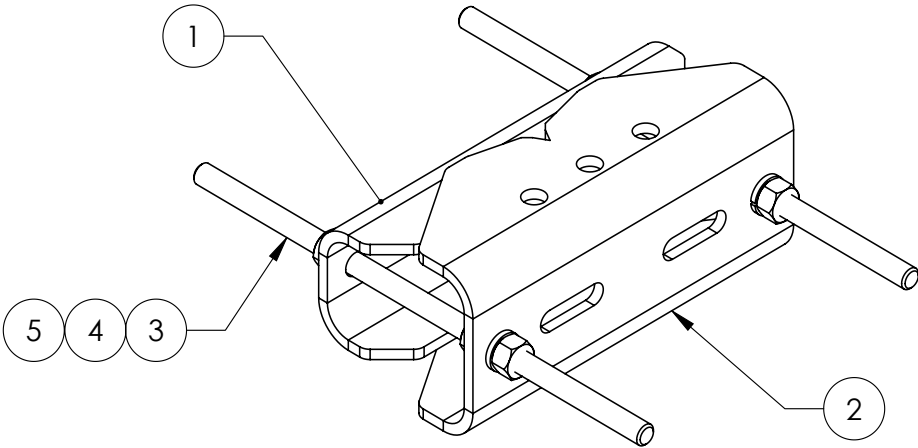
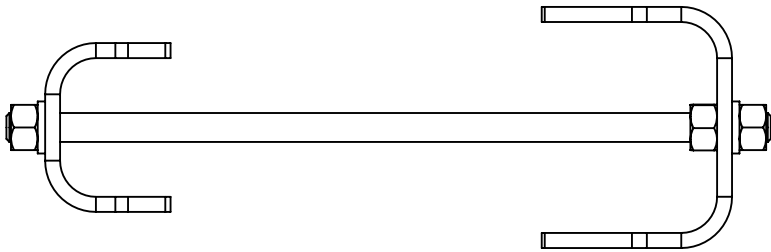
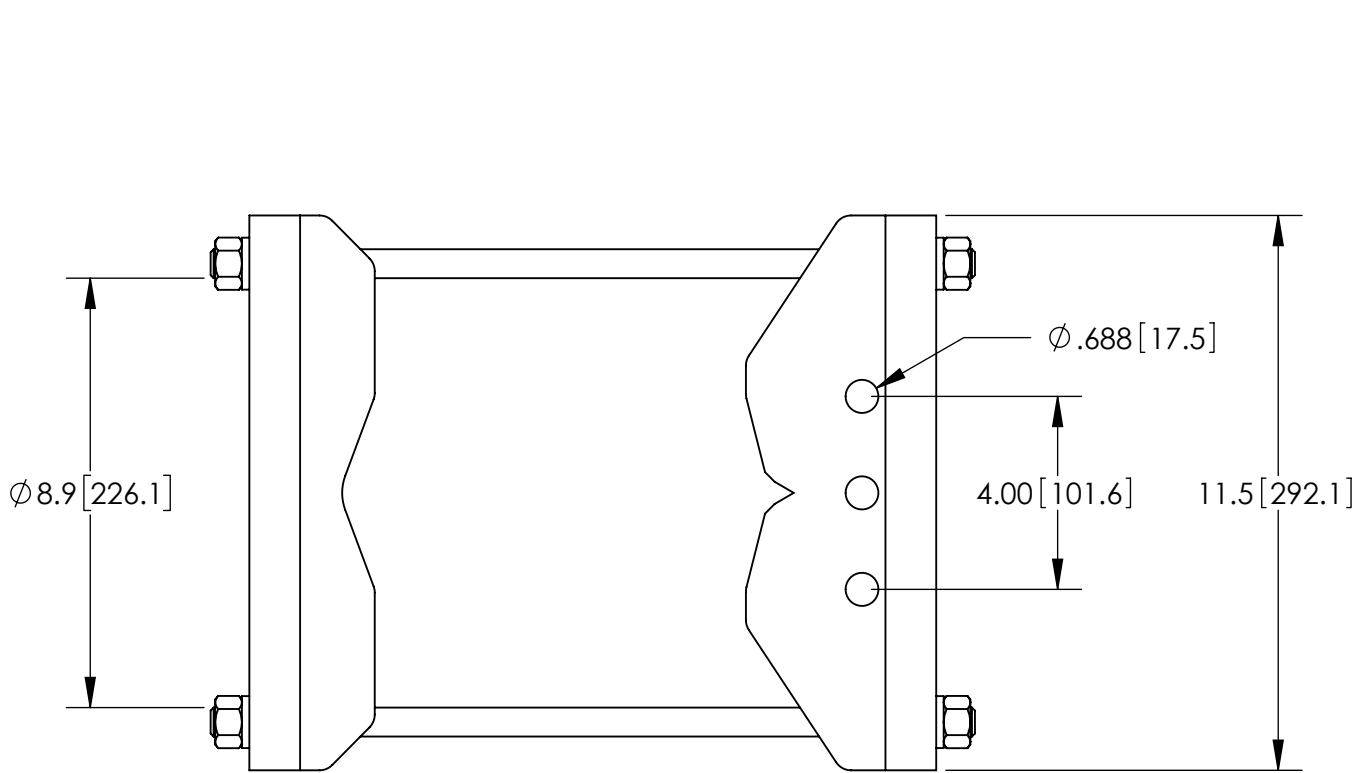


NOTES:
1. ALL METRIC DIMENSIONS ARE IN BRACKETS.

REVISIONS				
REV.	ECN	DESCRIPTION	BY	DATE
A		INITIAL RELEASE	ACG	04/28/25



ITEM	PART NO.	DESCRIPTION	QTY.	WEIGHT	NOTE NO.
1	MTC397521	CLAMP, BACK	1	6.94 LBS	
2	MTC397522	CLAMP, FRONT MOUNTING	1	10.02 LBS	
3	MT-382-16	5/8" X 16" THREADED ROD	2	1.28 LBS	
4	GN05	5/8" GALV HEX NUT	6	0.08 LBS	
5	GWL05	5/8" GALV LOCK WASHER	4	0.03 LBS	

These drawings and specifications are proprietary property and may be used only for the specific purpose authorized in writing.

ALL DIMENSIONS ARE IN INCHES U.O.S.
TOLERANCES UNLESS OTHERWISE SPECIFIED:
.X = ± .06
.XX = ± .03
.XXX = ± .010
ANGLES ±2°
FRACTIONS ±1/32
REMOVE BURRS AND BREAK EDGES .005

DO NOT SCALE THIS PRINT

DRAWN BY: ACG

CHECKED BY: MKV

DATE: 05/20/22

REVISION: A

SHEET: 1 of 1

SCALE: NTS

MATERIAL: ASTM A1011/A1018

FINISH: ASTM A123

WEIGHT: 23.74 LBS

PART NUMBER: FM-USM2080K1

DESCRIPTION: UNIVERSAL SADDLE MOUNT

DRAWING TYPE: ASSEMBLY DRAWING